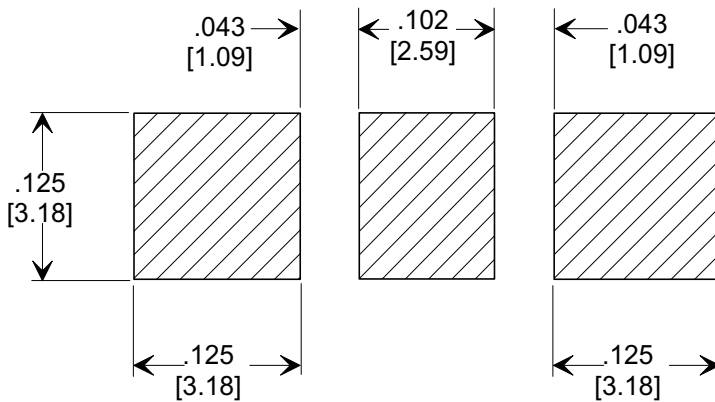
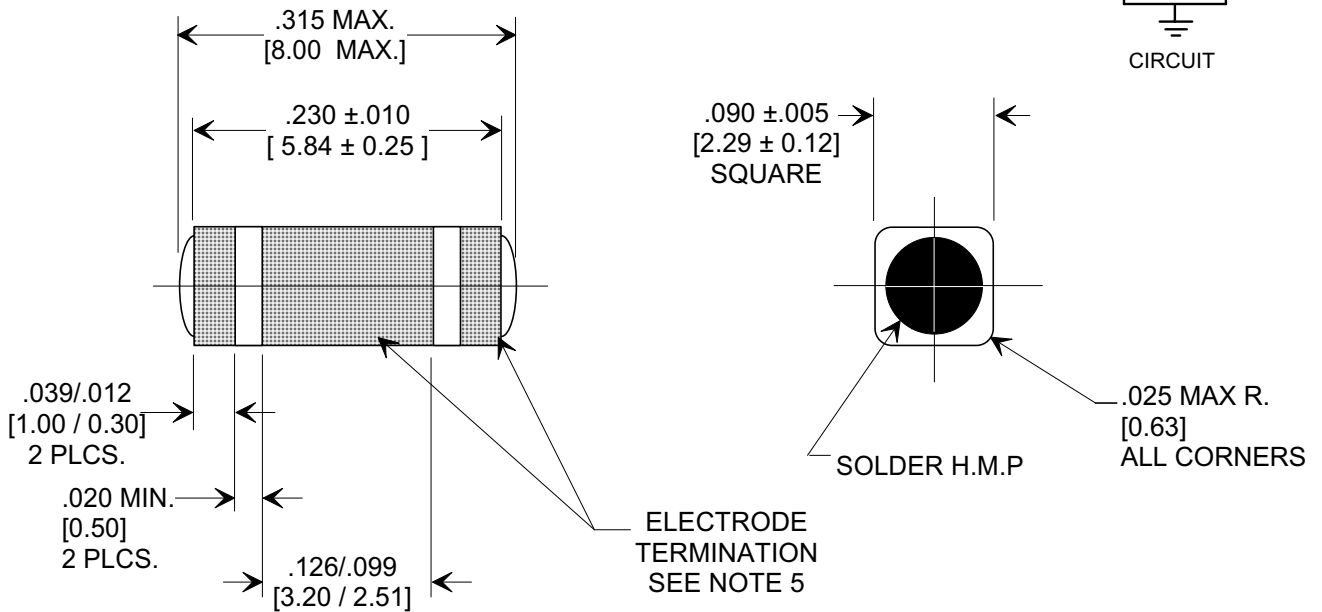
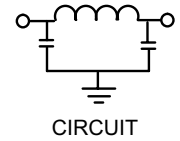
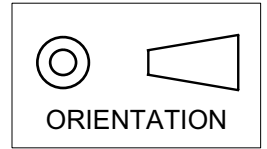


MARKETING SALES DRAWING
DIMENSIONS IN INCHES - DO NOT SCALE THIS DRAWING
DIMENSIONS IN METRIC []

Electrical Testing
 per Tusonix standard
 test plans and Mil-Std-202
 Test Methods.



- INDUCTANCE TO BE 0.1 H MINIMUM.
- PACKAGE: BULK OR BLISTER TAPE TO IEC-60286-3 TYPE II AND EIA-481-A.
- TUSONIX STANDARD PART NUMBER: 4700-003.
 TUSONIX RoHS COMPLIANT PART NUMBER: 4700-003 LF.
 CUSTOMER MUST SPECIFY STANDARD OR RoHS PART NUMBER WHEN ORDERING.
- PART MARKING: STANDARD PART: NO MARKING.
 RoHS PART: LABELED ON PACKAGING ONLY.
- ELECTRODE TERMINATION: STANDARD 60/40 SOLDER; RoHS COMPLIANT - MATTE TIN.

CAP.	TOLERANCE	WVDC		TEST VOLTAGE	I.R.MIN. @ 100 (VDC.)	IDC	TYPICAL NO LOAD INSERTION LOSS dB AT 25°C PER MIL-STD-220		
		85°C	+125°C				10 MHZ	100 MHZ	1 GHZ
2000 pF	GMV	100	100	300 VDC	10 G	10 A	10	45	70

X-2015 Rev-0

REVISION RECORD	Original Release C.O. 941020-1	--TOLERANCES-- Unless Otherwise Specified DECIMAL ± .005 [0.13] ANGLES ±	Title SURFACE MOUNT SQUARE STYLE PI FILTER	
	ADDED DC COLUMN E.C. 10-26-94		Drawn FG 9-9-94	Scale 7 X
	REISSUE 941020-1		Approved NV 9-9-94	
	DIM. .230 WAS .238 E.C. 11-16-94		A	
	REISSUE 941020-1		4700-003	
REVISED DWG. ORIENTATION SYMBOL & I.R. MIN. @ 100 (VDC) ADDED S.M. 02-13-03	ADDED NOTES 3,4 & 5.			
20030213-1-12				
REVISED DRAWING. S.M. 06-20-03				
20030619-2-01				
20050607-5-02				