

DTL 9930 Series Integrated Circuits

The DTL family can be used in most logic applications where speed is not the all-important parameter. Nevertheless the gate propagation delay is 25nS and flip-flop toggle frequency is 10MHz. Simplicity of design and interfacing make this family very popular, a full range of gates, flip-flops and a monostable being available. This family is compatible with TTL and LPDTL.

CHARACTERISTICS

Supply voltage	5 volts nominal
Fan-out	10
Noise Immunity	1 volt (typical)
Standard temperature range	0°C to +75°C
Packages Ceramic DIP	(Codes U6A-59X)

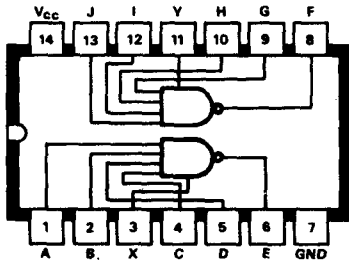
REFERENCE TABLE

DTL 9930 Series Ceramic Package See outline drawing No. 116 for physical dimensions

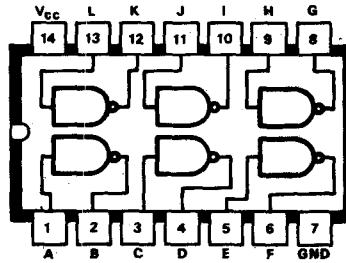
Code	Function	Stock No.	Connection Diagram No.
U6A909359X	Dual Master-Slave JK Flip-Flop with separate clock	19227F	A20
U6A909459X	Dual Master-Slave JK Flip-Flop with separate clock	19228D	A21
U6A909759X	Dual Master-Slave JK Flip-Flop with common clock	19229B	A22
U6A909959X	Dual Master-Slave JK Flip-Flop with common clock	19230E	A23
U6A993059X	Expandable dual 4-input NAND gate	19231C	A1
U6A993259X	Expandable dual 4-input NAND buffer	19232A	A2
U6A993359X	4-input NAND buffer	19233X	A3
U6A993559X	Dual 4-input expander	19234H	A4
U6A993659X	Expandable Hex Inverter	19235F	A5
U6A994459X	Dual 4-input NAND expandable buffer	19236D	A8
U6A994559X	Master-Slave JK or RS Flip-Flop	19237B	A9
U6A994659X	Quad 2-input NAND gate	19238X	A10
U6A994859X	Master-Slave JK or RS Flip-Flop	19239R	A11
U6A995159X	Monostable Multivibrator	19240A	A14
U6A996259X	Triple 3-input NAND gate	19242H	A18

MANUFACTURER'S CURRENT LIST PRICES ARE ALWAYS CHARGED

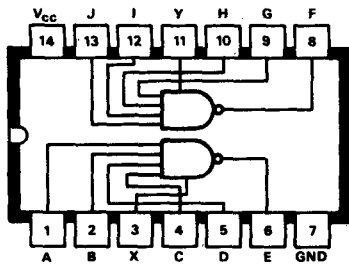
A1 930



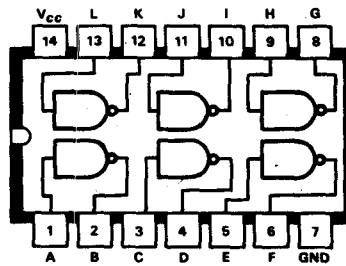
A4 935



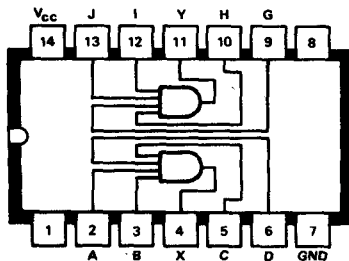
A2 932



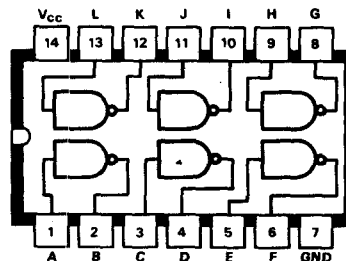
A5 936



A3 933



A6 937



7

PLEASE QUOTE STOCK NO. AND MANUFACTURER'S CODE WHEN ORDERING