



T-1 (3mm) 0.5" LEADS WITH 0.1" SPACING

Part No.	Color**	Lens	Luminous Intensity I _v Typ. @ 10mA	Typical Viewing Angle 2θ 1/2*	V _f Typ. @20mA
LL201R	Red (655 nm)	Diffused	0.8 mcd	76°	1.7V
LL202RT	Red (655 nm)	Transparent	2.0 mcd	30°	1.7V
LL221R	Hi-Eff. Red (635 nm)	Diffused	3.8 mcd	76°	2.0V
LL231G	Green (565 nm)	Diffused	3.8 mcd	76°	2.1V
LL232GT	Green (565 nm)	Transparent	8.0 mcd	30°	2.1V
LL251Y	Yellow (585 nm)	Diffused	3.8 mcd	76°	2.1V
LL252YT	Yellow (585 nm)	Transparent	8.0 mcd	30°	2.1V
LL291E	Orange (630 nm)	Diffused	3.8 mcd	76°	2.0V

T-1 (3mm) 0.5" LEADS WITH 0.05" SPACING

Part No.	Color**	Lens	Luminous Intensity I _v Typ. @ 10mA	Typical Viewing Angle 2θ 1/2*	V _f Typ. @20mA
LL209R	Red (655 nm)	Diffused	0.8 mcd	72°	1.7V
LL229H	Hi-Eff. Red (635 nm)	Diffused	3.8 mcd	72°	2.0V
LL239G	Green (565 nm)	Diffused	3.8 mcd	72°	2.1V
LL259Y	Yellow (585 nm)	Diffused	3.8 mcd	72°	2.1V
LL299E	Orange (630 nm)	Diffused	3.8 mcd	72°	2.0V

T-1 (3mm) 1.0" LEADS WITH 0.1" SPACING

Part No.	Color**	Lens	Luminous Intensity I _v Typ. @ 10mA	Typical Viewing Angle 2θ 1/2*	V _f Typ. @20mA
LL4201R	Red (655 nm)	Diffused	0.8 mcd	60°	1.7V
LL4202RT	Red (655 nm)	Transparent	4.0 mcd	45°	1.7V
LL4221H	Hi-Eff. Red (635 nm)	Diffused	5.6 mcd	60°	2.0V
LL4222HT	Hi-Eff. Red (635 nm)	Transparent	12.6 mcd	45°	2.0V
LL4231G	Green (565 nm)	Diffused	5.6 mcd	60°	2.1V
LL4232GT	Green (565 nm)	Transparent	12.6 mcd	45°	2.1V
LL4251Y	Yellow (585 nm)	Diffused	5.6 mcd	60°	2.1V
LL4252YT	Yellow (585 nm)	Transparent	12.6 mcd	45°	2.1V
LL4291E	Orange (630 nm)	Diffused	5.6 mcd	60°	2.0V
LL4292ET	Orange (630 nm)	Transparent	12.6 mcd	45°	2.0V

T-1 1/4 (5mm) 0.5" LEADS WITH 0.1" SPACING

Part No.	Color**	Lens	Luminous Intensity I _v Typ. @ 10mA	Typical Viewing Angle 2θ 1/2*	V _f Typ. @20mA
LL203R	Red (655 nm)	Diffused	0.8 mcd	54°	1.7V
LL204RT	Red (655 nm)	Transparent	2.0 mcd	32°	1.7V
LL223R	Hi-Eff. Red (635 nm)	Diffused	3.0 mcd	54°	2.0V
LL224HT	Hi-Eff. Red (635 nm)	Transparent	3.5 mcd	32°	2.0V
LL233G	Green (565 nm)	Diffused	3.0 mcd	54°	2.1V
LL234GT	Green (565 nm)	Transparent	3.5 mcd	32°	2.1V
LL253Y	Yellow (585 nm)	Diffused	3.0 mcd	54°	2.1V
LL254YT	Yellow (585 nm)	Transparent	3.5 mcd	32°	2.1V
LL293E	Orange (630 nm)	Diffused	3.0 mcd	54°	2.0V
LL294ET	Orange (630 nm)	Transparent	3.5 mcd	32°	2.0V

T-1 1/4 (5mm) 0.866" LEADS WITH 0.1" SPACING—HIGH INTENSITY

Part No.	Color**	Lens	Luminous Intensity I _v Typ. @ 10mA	Typical Viewing Angle 2θ 1/2*	V _f Typ. @20mA
LL307H	Hi-Eff. Red (635 nm)	Diffused	19.0 mcd	50°	2.0V
LL307HT	Hi-Eff. Red (635 nm)	Transparent	30.3 mcd	40°	2.0V
LL307G	Green (565 nm)	Diffused	12.6 mcd	50°	2.1V
LL307GT	Green (565 nm)	Transparent	29.0 mcd	40°	2.1V
LL307Y	Yellow (585 nm)	Diffused	12.6 mcd	50°	2.1V
LL307E	Orange (630 nm)	Diffused	19.0 mcd	50°	2.0V

T-1 1/4 (5mm) 1.0" LEADS WITH 0.1" SPACING—HIGH INTENSITY

Part No.	Color**	Lens	Luminous Intensity I _v Typ. @ 10mA	Typical Viewing Angle 2θ 1/2*	V _f Typ. @20mA
LL4203R	Red (655 nm)	Diffused	1.1 mcd	36°	1.7V
LL4204RT	Red (655 nm)	Transparent	5.5 mcd	16°	1.7V
LL4223R	Hi-Eff. Red (635 nm)	Diffused	8.7 mcd	36°	2.0V
LL4224RT	Hi-Eff. Red (635 nm)	Transparent	40.0 mcd	16°	2.0V
LL4233G	Green (565 nm)	Diffused	8.7 mcd	36°	2.1V
LL4234GT	Green (565 nm)	Transparent	40.0 mcd	16°	2.1V
LL4253Y	Yellow (585 nm)	Diffused	8.7 mcd	36°	2.1V
LL4254YT	Yellow (585 nm)	Transparent	40.0 mcd	16°	2.1V
LL4293E	Orange (630 nm)	Diffused	8.7 mcd	36°	2.0V
LL4294ET	Orange (630 nm)	Transparent	40.0 mcd	16°	2.0V

T-1 1/4 (5mm) 1.0" LEADS WITH 0.1" SPACING—LOW PROFILE

Part No.	Color**	Lens	Luminous Intensity I _v Typ. @ 10mA	Typical Viewing Angle 2θ 1/2*	V _f Typ. @20mA
LL5203R	Red (655 nm)	Diffused	0.5 mcd	64°	1.7V
LL5223H	Hi-Eff. Red (635 nm)	Diffused	4.0 mcd	64°	2.0V
LL5233G	Green (565 nm)	Diffused	4.0 mcd	64°	2.1V
LL5253Y	Yellow (585 nm)	Diffused	4.0 mcd	64°	2.1V

T-1 1/4 (5mm) 1.0" LEADS WITH 0.1" SPACING—ULTRA-BRIGHT

Part No.	Color**	Lens	Luminous Intensity I _v Typ. @ 10mA	Typical Viewing Angle 2θ 1/2*	V _f Typ. @20mA
LL353RC	GaAlAs Red (660 nm)	Water Clear	1000 mcd	20°	1.8V

T-1 1/4 (5mm) 0.866" LEADS WITH 0.1" SPACING—ULTRA-BRIGHT

Part No.	Color**	Lens	Luminous Intensity I _v Typ. @ 10mA	Typical Viewing Angle 2θ 1/2*	V _f Typ. @20mA
LL307R	GaAlAs Red (660 nm)	Diffused	38 mcd	50°	1.8V
LL307RT	GaAlAs Red (660 nm)	Transparent	58 mcd	40°	1.8V
LL307RC	GaAlAs Red (660 nm)	Water Clear	58 mcd	40°	1.8V
LL4263R	GaAlAs Red (660 nm)	Diffused	50 mcd	40°	1.8V
LL4264RT4	GaAlAs Red (660 nm)	Transparent	270 mcd	16°	1.8V
LL4264RT3	GaAlAs Red (660 nm)	Transparent	220 mcd	16°	1.8V
LL4264RT2	GaAlAs Red (660 nm)	Transparent	150 mcd	16°	1.8V
LL4268RC4	GaAlAs Red (660 nm)	Water Clear	270 mcd	16°	1.8V
LL4268RC3	GaAlAs Red (660 nm)	Water Clear	220 mcd	16°	1.8V
LL4268RC2	GaAlAs Red (660 nm)	Water Clear	150 mcd	16°	1.8V

T-1 (3mm) 1.0" LEADS WITH 0.1" SPACING—LOW CURRENT

Part No.	Color**	Lens	Luminous Intensity I _v Typ. @ 2mA	Typical Viewing Angle 2θ 1/2*	V _f Typ. @2mA
LL4221NLC	Hi-Eff. Red (635 nm)	Diffused	1.8 mcd	45°	1.8V

T-1 1/4 (5mm) 0.866" LEADS WITH 0.1" SPACING—LOW CURRENT

Part No.	Color**	Lens	Luminous Intensity I _v Typ. @ 2mA	Typical Viewing Angle 2θ 1/2*	V _f Typ. @2mA
LL307ELC	Hi-Eff. Red (635 nm)	Diffused	2.0 mcd	50°	1.8V

RECTANGULAR BARS

Part No.	Color**	Lens	Luminous Intensity I _v Typ. @ 10mA	Typical Viewing Angle 2θ 1/2*	V _f Typ. @20mA
LL3203R	Red (655 nm)	Diffused	0.2 mcd	130°	1.7V
LL3223H	Hi-Eff. Red (635 nm)	Diffused	1.7 mcd	130°	2.0V
LL3233G	Green (565 nm)	Diffused	1.7 mcd	130°	2.1V
LL3253Y	Yellow (585 nm)	Diffused	1.7 mcd	130°	2.1V
LL3293E	Orange (630 nm)	Diffused	1.7 mcd	130°	2.0V

SUBMINIATURE LEADS WITH AXIAL LEADS

Part No.	Color**	Lens	Luminous Intensity I _v Typ. @ 10mA	Typical Viewing Angle 2θ 1/2*	V _f Typ. @20mA
LL93EC	Orange (630 nm)	Water Clear	12.5 mcd	34°	2.1V
LL93GC	Green (565 nm)	Water Clear	15.0 mcd	34°	2.1V
LL93YC	Yellow (585 nm)	Water Clear	8.5 mcd	34°	2.1V

T-1 1/4 BI-POLAR INDICATORS

Part No.	Color	Lens	Luminous Intensity I _v Typ. @ 10mA	Typical Viewing Angle 2θ 1/2*	V _f Typ. @20mA
LL222RG	Red/Green	White Diffused	3.0/1.5 mcd	54°	1.9/2.0V

T-1 1/4 DUAL COLOR INDICATORS

Part No.	Color	Lens	Luminous Intensity I _v Typ. @ 10mA	Typical Viewing Angle 2θ 1/2*	V _f Typ. @20mA
LL232RG	Red/Green	White Diffused	2.2/5.0 mcd	54°	2.1/2.2V
LL232EG	Orange/Green	White Diffused	5.0/5.0 mcd	54°	2.0/2.1V

*2θ 1/2 is the off axis angle at which the luminous intensity is half the axial luminous intensity.
**Peak Emission wavelength (nm)



LOGIC STATUS INDICATORS

Part No.	Color**	Lens	Luminous Intensity I _v Typ. @ 10mA	Typical Viewing Angle 2θ 1/2*	V _f Typ. @ 20mA	Package Style
LL503-01R	Red (655 nm)	Diffused	0.8 mcd	60°	1.7V	M
LL523-01H	Hi-Eff. Red (635 nm)	Diffused	5.6 mcd	60°	2.0V	M
LL533-01G	Green (565 nm)	Diffused	5.6 mcd	60°	2.1V	M
LL553-01Y	Yellow (585 nm)	Diffused	5.6 mcd	60°	2.1V	M
LL503-11R	Red (655 nm)	Diffused	0.8 mcd	60°	1.7V	N
LL523-11H	Hi-Eff. Red (635 nm)	Diffused	5.6 mcd	60°	2.0V	N
LL533-11G	Green (565 nm)	Diffused	5.6 mcd	60°	2.1V	N
LL553-11Y	Yellow (585 nm)	Diffused	5.6 mcd	60°	2.1V	N
LL503-04R	Red (655 nm)	Diffused	0.8 mcd	60°	1.7V	O
LL523-04H	Hi-Eff. Red (635 nm)	Diffused	5.6 mcd	60°	2.0V	O
LL533-04G	Green (565 nm)	Diffused	5.6 mcd	60°	2.1V	O
LL553-04Y	Yellow (585 nm)	Diffused	5.6 mcd	60°	2.1V	O
LL503-14R	Red (655 nm)	Diffused	0.8 mcd	60°	1.7V	P
LL523-14H	Hi-Eff. Red (635 nm)	Diffused	5.6 mcd	60°	2.0V	P
LL533-14G	Green (565 nm)	Diffused	5.6 mcd	60°	2.1V	P
LL553-14Y	Yellow (585 nm)	Diffused	5.6 mcd	60°	2.1V	P

STANDARD BAR GRAPHS†

Part No.	Color**	Lens	Luminous Intensity I _v Typ. @ 10mA	Typical Viewing Angle 2θ 1/2*	V _f Typ. @ 20mA	Package Style
LL7164R	Red (655 nm)	White Diffused	0.5 mcd	100°	1.7V	Q
LL7164H	Hi-Eff. Red (635 nm)	Diffused	2.0 mcd	100°	2.0V	Q
LL7164G	Green (565 nm)	White Diffused	2.0 mcd	100°	2.1V	Q
LL7164Y	Yellow (585 nm)	White Diffused	2.0 mcd	100°	2.1V	Q
LL7164E	Orange (630 nm)	White Diffused	2.0 mcd	100°	2.0V	Q

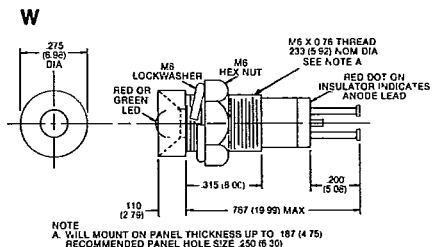
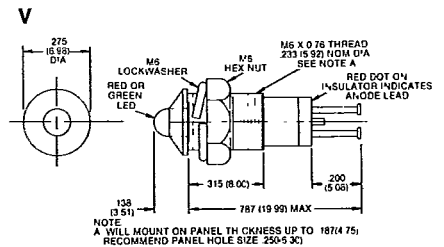
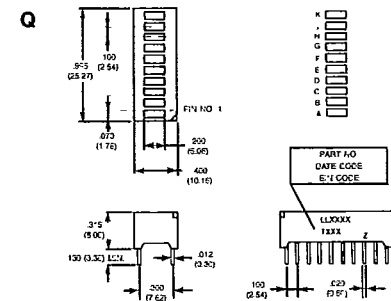
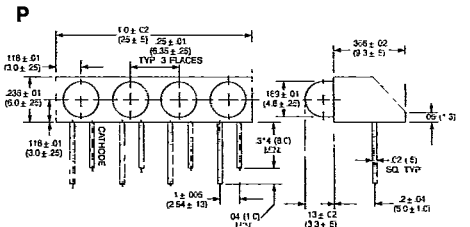
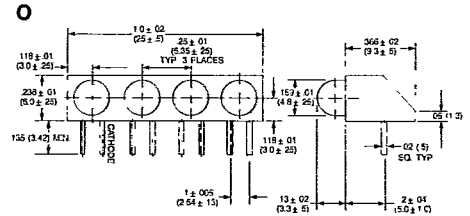
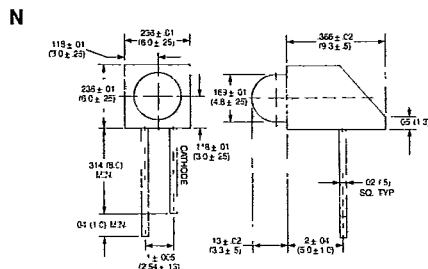
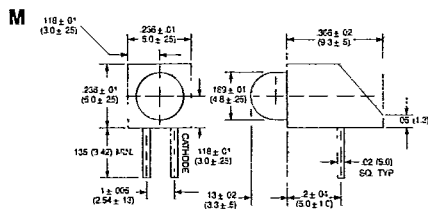
*2θ 1/2 is the off-axis angle at which the luminous intensity is half the axial luminous intensity
 **Peak Emission wave/length (nm)

†Mixed color bar graphs are available. Contact factory with requirements.

SOLID STATE INDICATOR ASSEMBLIES

Part No.	Color	Lens	Luminous Intensity Min. (mcd) Typ.	Housing Type	Package Style
BD361R	GaP Red	Red Diffused	0.5 @ 10mA 1.0 @ 20mA	Chrome-plated	V
BD361G	GaP Green	Green Diffused	0.5 @ 10mA 1.0 @ 20mA	Chrome-plated	V
BD361RK	GaP Red	Red Diffused	0.5 @ 10mA 1.0 @ 20mA	Black anodized	V
BD361GK	GaP Green	Green Diffused	0.5 @ 10mA 1.0 @ 20mA	Black anodized	V
BD362R	GaP Red	Red Diffused	1.5 @ 10mA 3.0 @ 20mA	Chrome-plated	W
BD362G	GaP Green	Green Diffused	1.5 @ 10mA 3.0 @ 20mA	Chrome-plated	W
BD362RK	GaP Red	Red Diffused	0.5 @ 10mA 1.0 @ 20mA	Black anodized	W
BD362GK	GaP Green	Green Diffused	0.5 @ 10mA 1.0 @ 20mA	Black anodized	W

PACKAGE DIMENSIONS



- NOTES:
- All dimensions are in inches (millimeters).
 - Tolerance is ±.010" (0.25mm) unless otherwise noted
 - Protruded resin under flange is .059" (1.5mm) max.
 - Lead spacing is measured where the leads emerge from the package.
 - Specifications are subject to change without notice.

Find price and stock options from leading distributors for LL232RG on Findchips.com:

<https://findchips.com/search/LL232RG>

Find CAD models and details for this part:

<https://findchips.com/detail/ll232rg>